

TV-158B

VERTICAL MACHINING CENTER



FEATURES

- Powerful 30 HP, 2 Speed Spindle Motor
- 10,000 RPM Maximum Spindle Speed
- Heavy Duty Ceramic Spindle Bearings
- Air/Oil Mist Spindle Bearing Lubrication
- Oilmatic Spindle Cooling System
- AC Digital Servo & Spindle Drives
- Spindle Air Curtain System
- Rigid Tapping & Helical Interpolation
- Cutting Air Blast
- Rigid Meehanite® Castings
- RS 232C Interface
- Remote Manual Pulse Generator
- Heavy Duty Coolant Pump
- Fast 24 Tool Swing Arm ATC System
- Random Access & Bi-directional Tool Magazine
- 260 Ft-lb of Torque at 500 RPM
- Table Load Up to 4400 lbs.
- Extra-Wide Hardened & Ground Ways
- World Patented One Piece T-Base Design
- Hand-Held Coolant Nozzle
- Full Alphanumeric Keyboard
- Full Chip Guards
- precision Hardened & Ground Ballscrews
- Automatic Central Lubrication System
- Dual Spiral Type Chip Auger
- Free Standing Coolant Tank

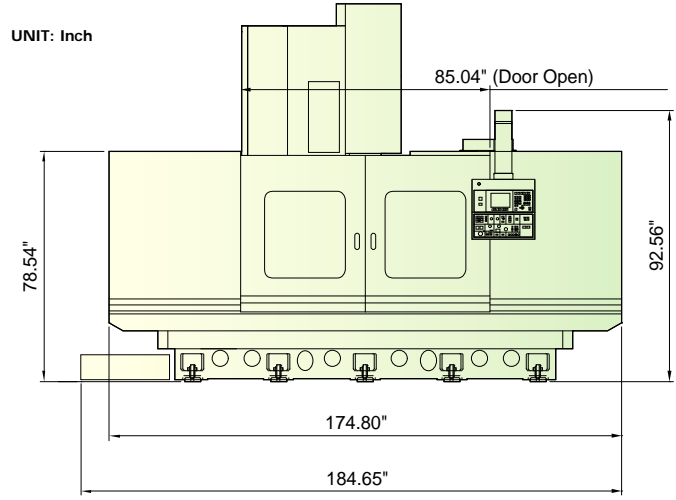
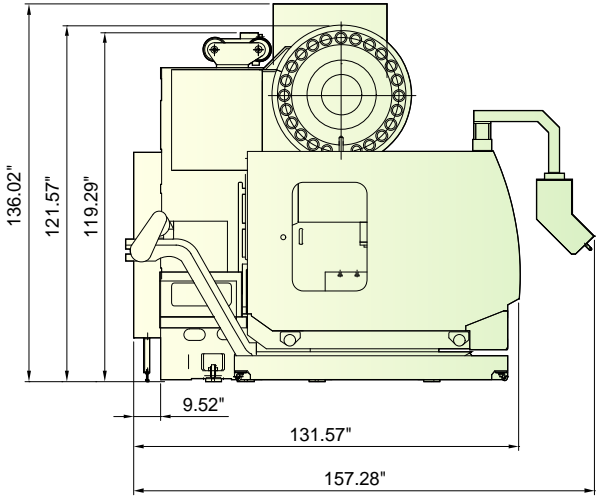
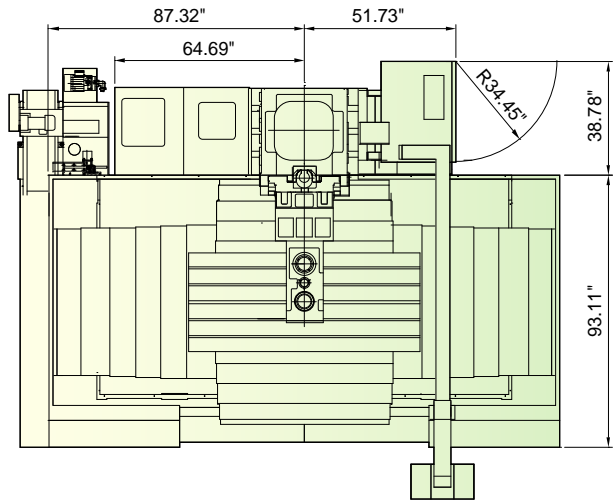
YCI SUPERMAX®
PRECISION MACHINES

STANDARD ACCESSORIES

- 24 Tool A.T.C.
- Halogen Work Lamp
- Pilot Lamp (M30)
- Tool Kit
- Spindle Air Blast
- Full Chip Enclosure
- Rigid Tapping and Helical Interpolation
- Remote M.P.G Hand wheel
- Cutting Air Blast
- Dual Chip Augers
- X, Y, & Z Guideway Covers
- Coolant System
- Coolant Nozzle
- Central Lubrication
- Leveling Blocks and Bolts
- Mechanical, Electrical & Operating Manual

OPTIONAL ACCESSORIES

- Optical Scale
- Foundation Bolts
- 4th Axis Rotary Table
- Z Axis Guideway Cover
- Spindle Cooling System
- Electrical Cabinet Heat Exchanger
- Lift-up Type Chip Conveyor
- Workpiece Measurement System (RENISHAW MP-10)
- Tool Length Measurement System (METROL T-24E-04-1)
- Coolant through Spindle System (DIN69871 Form-B)



SPECIFICATIONS

■ SPINDLE	
Motor	FANUC AC Digital, 2 Speed Spindle Motor
Horse Power	30 HP (30 Minutes)
Maximum Speed	10,000 rpm
■ TRAVEL	
X Axis	59.0"
Y Axis	33.8"
Z Axis	27.5"
■ TABLE	
Table Size	66.9" x 33.8"
Load Capacity	4,400 lb.
Number of T-Slots x Size x Pitch	5 x 0.86" x 5.9"
■ FEED RATE	
Rapid Feed Rate	X, Y: 590 ipm, Z: 472 ipm
Cutting Feed Rate	0.04 - 394 ipm

■ ATC	
Tool Type	CAT-50 / BT-50 (Optional)
Maximum Tool Weight	44.0 lb./each
Maximum Tool Length	13.7"
Tool Magazine Capacity	24 (30 & 40 optional)
■ ACCURACY (Linear)	
Table Positioning	± 0.00016"
Repeatability	± 0.00008"
■ GENERAL	
Power Requirement	220V, 3 Phase, 60Hz
Power Consumption	45 kVA
Pneumatic Pressure (Min.)	85 psi
Machine Weight	36,300 lb.

Note: The manufacturer reserves the right to modify the design, specifications, mechanisms...etc. to improve the performance of the machine without notice. All the specifications shown above are just for reference.



YCI Inc.
 10629 Forest Street, Santa Fe Springs, CA 90670

TEL 562.906-6118 FAX 562.906-6107

DEALER: